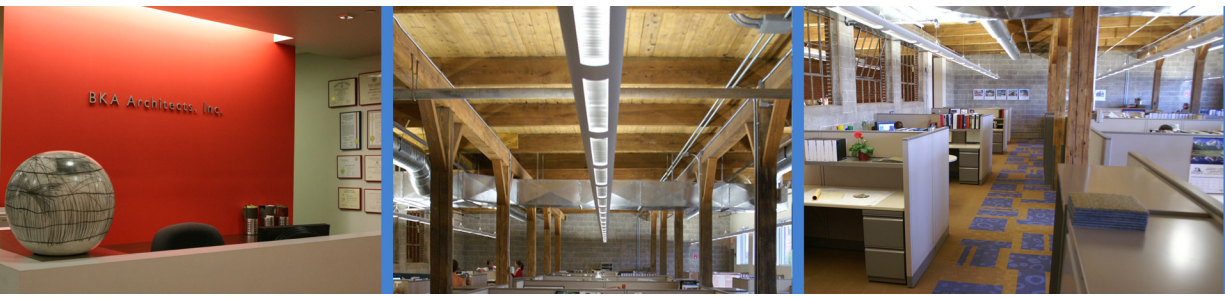




Wilmington Plaza Designed by BKA Architects Opens

BROCKTON, MA, August 6, 2008 – The new strip center in Wilmington, Massachusetts developed by Coffman Realty and designed by BKA Architects has finished construction and started leasing the units.

The new strip center has a total of five buildings of which two are located on pad sites. The three buildings designed by BKA Architects total 62,000 square feet, and are able to accommodate a different number of tenants. The first and largest building is 52,000 square feet and is sub-divided to house seven tenants. The anchor tenant for this building is Staples. The second 6,700 square foot building has six units. The third and last building, at 3,200 square feet, accommodates two units. One of the two units has been leased by Starbucks. Aside from the national retailers who have staked a claim in the development, a number of local retailers are leasing spaces as well. The design of the strip center is fairly typical of this building type. The outer shells of the buildings are comprised of plaster-stucco with a stone veneer base at the primary facades and colored concrete masonry units at the service areas of the exterior. To emphasize the entrances to each retail unit, metal and custom fabric canopies were included in the design, and under-mount lighting works to brighten the facade. To assist the client to visualize the project and to obtain town approvals, BKA Architects developed renderings to communicate the design intent. For tenant units that were not leased before the onset of construction, the interiors of the units were purposely designed as “vanilla boxes” in order to show prospective tenants what the space could look like. BKA Architects has been working with the tenants to build-out their space as the space is leased.



The two pad sites were leased and developed separately by tenants; Danvers Bank and Ruby Tuesday.